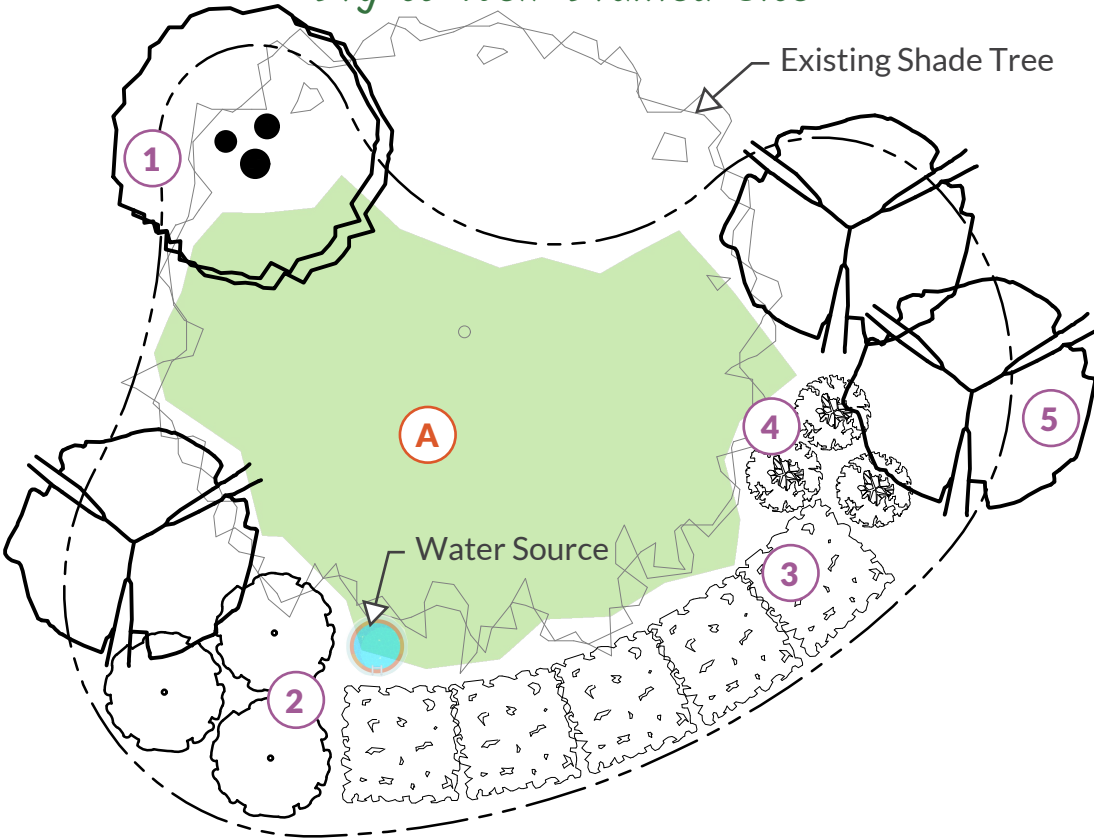




Birdscaping Planting Plan

Wild Ones Greater Cleveland

Dry to Well-Drained Site



PLANT LIST:

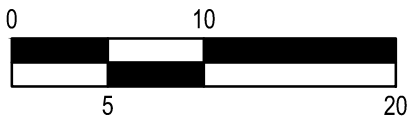
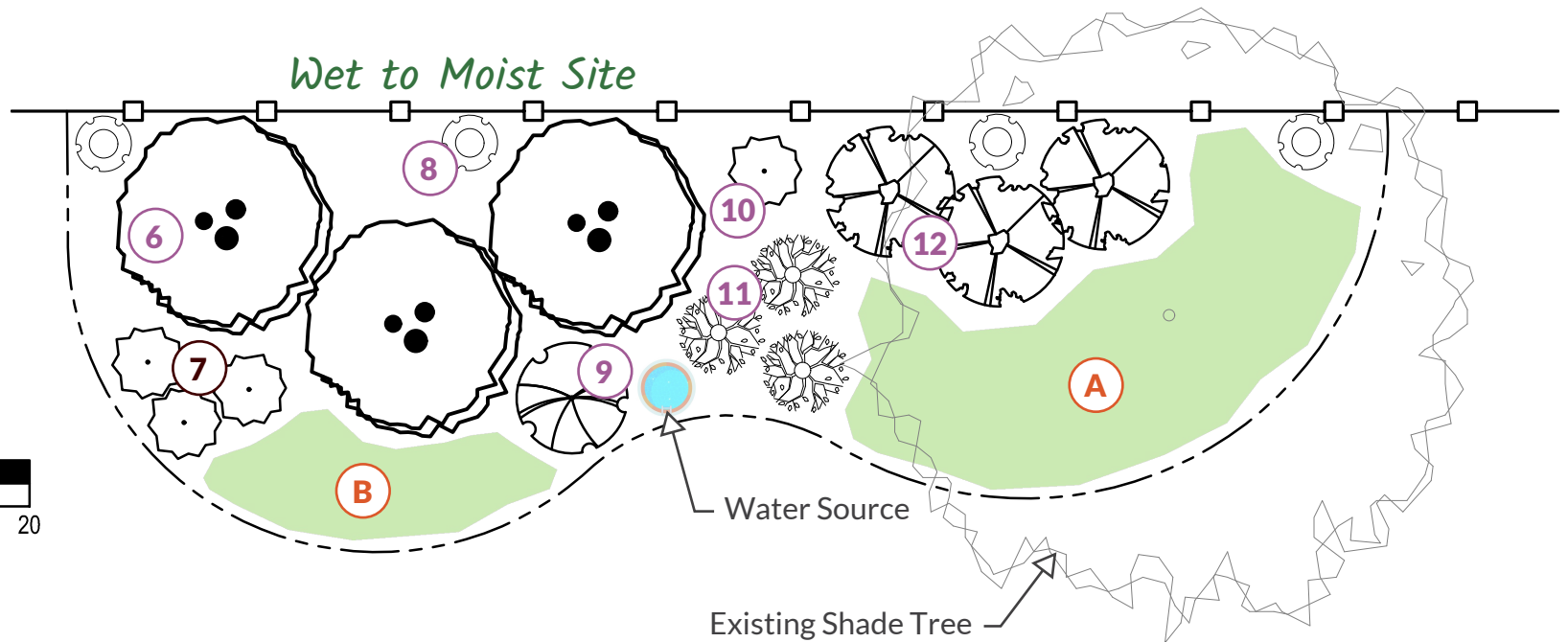
1. *Cornus florida* - Flowering Dogwood
2. *Corylus americana* - American Hazelnut
3. *Rhus aromatic* - Fragrant Sumac
4. *Aronia melanocarpa* - Black Chokeberry
5. *Cercis canadensis* - Eastern Redbud
6. *Amelanchier laevis* - Allegheny Serviceberry
7. *Ilex verticillata* - Winterberry Holly (female)
8. *Vitis vulpine* - Frost Grape Vine
9. *Symphoricarpos orbiculatus* - Coralberry
10. *Ilex verticillata* - Winterberry Holly (male)
11. *Cornus stolonifera* - Red Osier Dogwood
12. *Lindera benzoin* - Spicebush

A. Shade loving perennials and forbs

B. Sun loving perennials and forbs

(for a "soft landing" and/or seed production)

Wet to Moist Site



1"=10'

Horizontal Scale in Feet

8.5"x11"

Existing Shade Tree